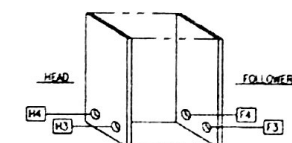
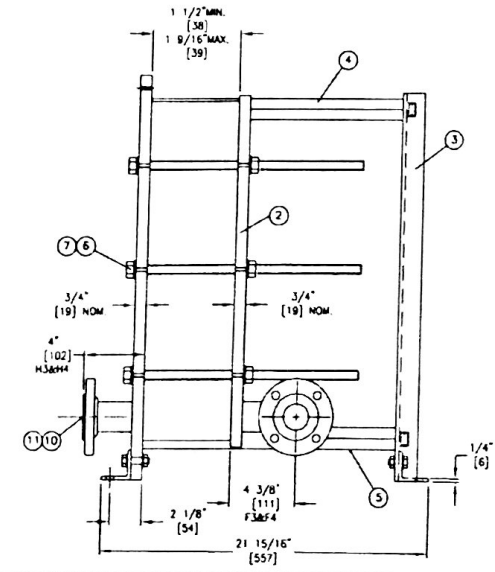
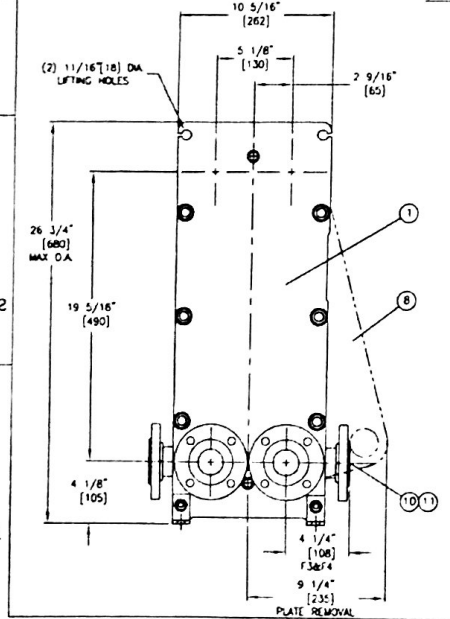
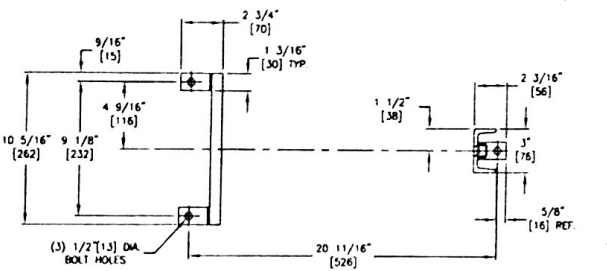
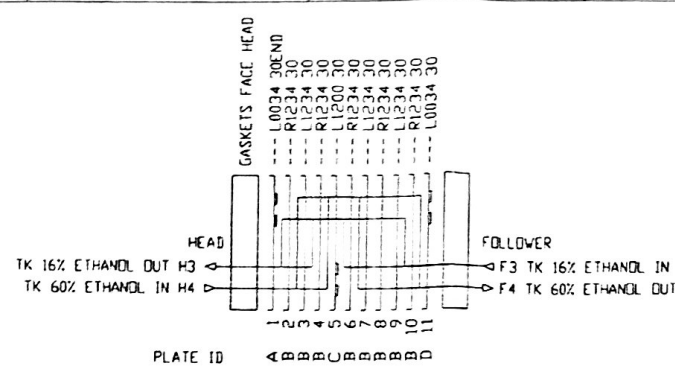


MATERIALS OF CONSTRUCTION		
ITEM NO.	DESCRIPTION	MATERIAL
1	HEAD	SAS18 CH70
2	FOLLOWER	SAS16 GR70
3	END SUPPORT	ASM
4	TOP BAR	304 STAINLESS STEEL
5	BOTTOM BAR	304 STAINLESS STEEL
6	M16 DIA. TE BAR	SA193 GRB7 ZINC PLATED
7	TE BAR HEX NUTS	SA194 GR2M ZINC PLATED
8	HEAT TRANSFER PLATES	SA242 TP316
10	NOZZLE	316L STAINLESS STEEL
11	FLANGE	CARBON STEEL GALVANIZED

APV
FACTORY SERVICE
FOR PARTS AND SERVICE
CALL OUR CUSTOMER
SERVICE DEPARTMENT
1-888-278-4321



- NOTES**
- THE INSTALLATION, OPERATION AND MAINTENANCE OF THIS HEAT EXCHANGER SHALL BE IN ACCORDANCE WITH THE APV PANDA-FLOW PLATE HEAT EXCHANGER INSTRUCTION MANUAL.
 - THIS MODEL HEAT EXCHANGER IS TIGHTENED USING A WRENCH ON THE TE BAR HEX NUTS AT THE HEAD AND FOLLOWER ENDS. CLEAN AND LUBRICATE THE THREADS BEFORE OPENING OR CLOSING USING A LUBRICANT COMPATIBLE WITH CARBON STEEL. APV RECOMMENDS HEYER-SIEZIG REGULAR GRADE. DO NOT USE COMMON GREASE. THE PLATE PACK IS TO BE TIGHTENED IN ACCORDANCE WITH THE INSTRUCTION MANUAL SUPPLIED. DO NOT TIGHTEN BELOW THE MINIMUM DIMENSION SHOWN. THE CUSTOMER IS RESPONSIBLE FOR PROTECTING:
 - HOLES PER ASTM A36 WITH A RECOMMENDED DIAMETER OF 1/2"
 - PROTECTION AGAINST START UP OR OPERATING PRESSURES EXCEEDING THE MAXIMUM ALLOWABLE WORKING PRESSURE
 - SPRING TO THE FOLLOWER OR CONNECTION CHAINS THAT ALLOWS FOR FREE MOVEMENT WHEN THE UNIT IS OPENED FOR SERVICE AND PROVIDES FLEXIBILITY FOR THE VARIATION OF THE COMPRESSED PLATEGE DIMENSIONS
 - NOZZLES ARE PROVIDED WITH A SERIATED/PHONO RASSED FACE FINISH
 - BOLT HOLES STANDOFF CENTERLINES SHOWN
 - DIMENSIONS ARE SHOWN IN INCHES. DIMENSIONS IN BRACKETS [] ARE IN MILLIMETERS
 - STANDARD TOLERANCES:
FRAME AND FOLLOVER BOLT LOCATIONS: ±1/4 INCH [±3mm]
NOZZLE CENTERLINE AND FACE DIMENSIONS: ±1/8 INCH [±3mm]

DESIGN SPECIFICATIONS

DESIGN CODE	SCALE SECTION NO. 10-1
2004-10700 2005 A02ENGA	
MAX. ALLOWABLE WORKING PRESSURE	100 PSIG
MINIMUM DESIGN METAL TEMPERATURE	-20 F @ 100 PSIG
HYDROTEST PRESSURE	130 PSIG
MINIMUM OPERATING TEMPERATURE	-20 F
MAXIMUM OPERATING TEMPERATURE	275 F
SERIAL NUMBER	20081001000627
HEAT TRANSFER AREA	8.3 SQ. FT.
FRAME SIZE	NO. 1
MAXIMUM FRAME CAPACITY	51 PLATES
DRY WEIGHT	164 LBS.
FLOODED (OPERATING) WEIGHT	168 LBS.
TOTAL LIQUID VOLUME	0.4 GALS.
FINISH	APV STANDARD PART 3186
ACCESSORIES SUPPLIED	

OPERATING CONDITIONS

LIQUID	FLOW RATE	TEMP. °F	ΔP (PSIG)
TK 60% ETHANOL	1155 lb/hr	24F - 110F	1.0
TK 16% ETHANOL	2298 lb/hr	94 F - 147	2.8

Plate (Total 11)	ID Qty Part Number	Description
A 1	0813FXAKBAKEXA	PANG ASTY SRI (30) END 316 0.8 5TH EPDM RC (BL/WH)
B 8	0813FXAKBAKEXA	PANG ASTY SRI (30) FLOW 316 0.8 PCL EPDM RC (BL/WH)
C 1	0813FXAKBAKEXA	PANG ASTY SRI (30) FLOW 316 0.8 PCL EPDM RC (BL/WH)
D 1	0813FXAKBAKEXA	PANG ASTY SRI (30) FLOW 316 0.8 PCL EPDM RC (BL/WH)

Gaskets	Qty Part Number	Hand	Description
2	08000000000000000000	RING	EPDM R.C. (Paraflex)

Frame	Qty Part Number	Description
1	SRI12KX11KEX111A	SRI M-11y (C.S.S 12K) Size 1, Max 53 Plates
1	3900124AAAR7X7E	Head
1	383115AAAR7X7E	Follower

Fitting	Qty Part Number	Position	Description
2	0150DOPAXXA	N3/M	NPS 1.5 LF SS 316L ANSI B16.5 CL150
2	0150DOPAXXA	F3/F4	NPS 1.5 90° LF SS 316L ANSI B16.5 CL150

Qty Part Number	Accessory Description
1	ASME U STAMP
	ASME INSPECTION AND U STAMP

FOR INFORMATION ONLY
DRAWING NOTES SHIPPING WEIGHTS
AND DIMENSIONS - SUPPLIED FOR
UNLOADING // STORAGE PURPOSES

Central Illinois Energy
Canton, IL
TAG: EP-4108 Fusel Oil Cooler
20063003000627
P.O. NO: 73338-09A

invensys APV Products
1200 W. Ash Street
Goldsboro, NC 27530
Tel. (919) 735-4570/Fax: (919) 581-1134

SRI M-11 PLATE EXCHANGER

Checked	Date	Supervisor	Drawn	Date	Drawing No.	Sheet
					NTS	1 OF 1
Approved	Date	Drawn	Date	Drawing No.	Sheet	
		KWR	8-25-06	0600627		01

CALDEX 0600627